



## FOR YOUR HOME & BUSINESS

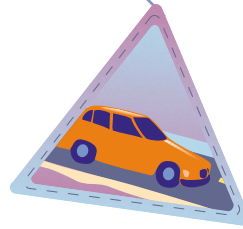
### Using detergents, cleaners, solvents, & paints?

- Buy “non toxic” products
- Use sparingly and follow application directions
- Store house maintenance products away from rain and runoff
- Clean up spills
- Dispose of properly at Tucson/Pima County Household Hazardous Waste (HHW)

## FOR YOUR YARD

### Working in your yard?

- Use pesticides, insecticides, herbicides or fertilizers appropriately
  - Use sparingly and follow product directions
  - Never apply during rain or immediately before a storm
  - Clean up spills
  - Dispose of properly (HHW)
- Clean up yard debris - keep it out of streets, alleys, and washes
- Clean up pet waste
- Control erosion in your yard by landscaping bare areas



## FOR YOUR VEHICLES

### Maintaining your vehicles?

- Change oil properly  
Collect drips and clean up spills
- Keep your vehicle “leak free”  
Check your parking areas for drips & stains
- Wash your vehicle at commercial carwashes that can recycle water or send it to the sanitary sewer
- Tune up your vehicle to reduce tailpipe emissions
- Reduce pollution at the source, drive less (carpool, ride the bus, bike, or walk)

### Recycling used fluids or parts?

- The following can be recycled at place of purchase or disposed of at Tucson/Pima County Household Hazardous Waste (HHW)
  - Oil and oil filters
  - Fuel: gas and diesel
  - Fluids: transmission, radiator, brake
  - Parts: batteries and tires



### Tucson/Pima County Household Hazardous Waste (HHW)

Main Location:

2440 Sweetwater Drive (Prince and I-10)  
Fridays & Saturdays: 8 am-Noon

For other times & locations call (520) 888-6947  
[www.deq.pima.gov/waste/househol.htm](http://www.deq.pima.gov/waste/househol.htm)





## WE ARE ALL WORKING TO PREVENT STORMWATER POLLUTION



**Town of Marana**  
(520) 297-2920  
[www.marana.com](http://www.marana.com)



**Town of Oro Valley**  
Department of Public Works  
(520) 229-4880  
[www.townoforovalley.com](http://www.townoforovalley.com)



**City of South Tucson**  
Planning Department  
(520) 792-2424



**City of Tucson**  
Department of Transportation  
Stormwater Management Section  
(520) 791-4251  
[www.dot.ci.tucson.az.us/stormwater](http://www.dot.ci.tucson.az.us/stormwater)



**Pima County**  
Dept. of Environmental Quality  
(520) 740-3340  
[www.deq.pima.gov](http://www.deq.pima.gov)



**Pascua Yaqui Tribe**  
Department of Public Safety  
Environmental Protection  
(520) 879-5600



**Town of Sahuarita**  
Department of Engineering  
(520) 648-1972  
[www.ci.sahuarita.az.us](http://www.ci.sahuarita.az.us)



**Tohono O'odham Nation**  
Department of Public Safety  
(520) 383-8690



Pima Association of Governments  
and the Stormwater Management Working Group  
[www.pagnet.org](http://www.pagnet.org) (520) 792-1093



# Prevent Stormwater POLLUTION



**STORMWATER POLLUTION** occurs when rain water runoff transports oil, grease, and trash to our fragile washes.

Keeping stormwater clean and protecting our desert is a job for all of us.