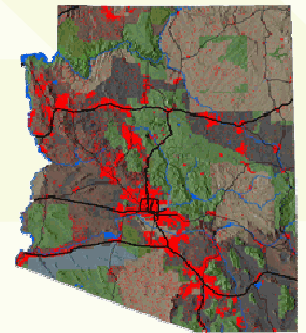


OPUS, UrbanSim & AZ-SMART

Current Status

COG/MPO Mini Conference
August 8, 2008





Stable Release (expected Aug 08)



- OPUS (Open Platform for Urban Simulation)
 - Windows Installer
 - GUI based
 - All configurable items in a XML file
 - ArcGIS read, write, geoprocessing

The screenshot displays the OPUS software interface with several windows open:

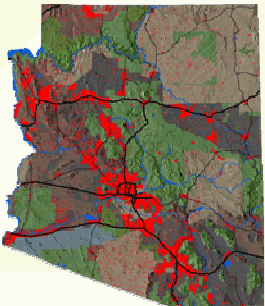
- File Explorer:** Shows a project tree with folders like 'seattle_parcel', 'base_year_data', and 'run'. A file named 'zone_map_2001_zone_number_of_jobs' is selected.
- Simulation Progress:** Shows a map titled 'zone_number_of_jobs' with a color scale from -5,000,000 to 30,000,000. The map shows a geographic area with varying colors representing job density.
- Configuration Panel:** Shows a list of parameters and their values, such as 'base_year' set to 2000, 'end_year' set to 2002, and 'model_template' set to 'Skip'.
- Simulation Progress Window:** Shows 'Running model from 2001 to 2002' and 'Total Progress 100%'. It includes a progress bar and a 'Year Progress' section.
- Summary Table:** A table with columns: Attribute name, mean, sd, sum, min. It lists various metrics like 'far_id', 'travel_time_to_airport', and 'utility_for_sov'.
- Table View:** A detailed table with columns: fact_id, emp_time_to_work, travel_time_to_job, travel_time_to_sov, travel_time_from_sov, travel_time_to_sov. It contains numerical data for various fact IDs.



Stable Release (expected Aug 08)

■ UrbanSim

- Control totals:
 - At any geography (County, sub-region, TAZ)
 - Multi level control – feedback from lower to higher
- Parcel/Building level implementation
- Simulates development process using:
 - development templates, status, velocity function
 - ROI

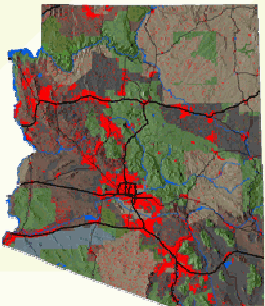




Stable Release (contd.)

UrbanSim

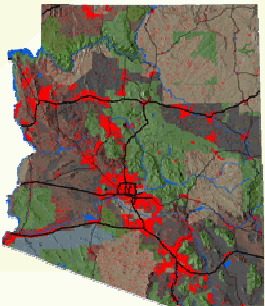
- Database Connections
 - SQLServer, .dbf, .xls
- Generic Model Creator via GUI
 - Regression, Choice, Scaling, Allocation
- Stop/resume functionality
- Dynamic definition of indicators
- Documentation
 - Detailed data model





AZ-SMART

- Phase I contract complete
- Working in development of data for Maricopa County (90% complete)
- Extensive testing in progress
- Frequent interaction with UW on bugs and documentation enhancement
- Identify tasks for Phase 2





Questions?

MAG & PAG Modeling Team

Rita Walton

Hanyi Li

Kristen Zimmerman

Mark Roberts

Mike Corlett

Anubhav Bagley

